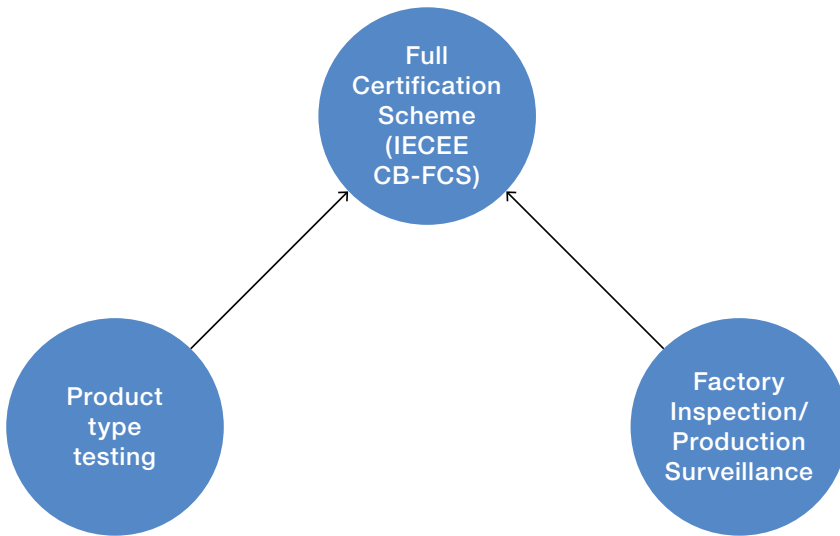




The IECEE CB-FCS

Full Certification Scheme



The IECEE Full Certification Scheme (IECEE CB-FCS) is a comprehensive international certification scheme for electrical products. It is in line with Product Certification Scheme No.5, according to the International Standard ISO/IEC 17067, and goes beyond the mere type testing to IEC Standards as per the basic IECEE CB Scheme (being in line with ISO/IEC Product Certification Scheme No.1)

Main benefits of the Full Certification Scheme

- Testing also for national differences to IEC Standards in countries
- Ensuring compliance of the product components is duly documented
- Recognizing certification bodies shall not request product samples for verification/additional testing
- Initial and/or periodic surveillance of production, including audit of manufacturer's quality system and factory surveillance/inspection visits

Conformity Assessment Certificates with Conformity Assessment Reports

Operation of the IECEE CB-FCS is based on mutual recognition of Conformity Assessment Certificates (CACs) with

associated Conformity Assessment Reports (CARs), i.e. amongst all the certification bodies who have signed the CB-FCS Multi-lateral Agreement (MLA).

The CACs with CARs may also be used for direct acceptance in the market place.

In addition to type testing resulting in the issuance of CACs and associated CARs, signatories to the CB-FCS MLA, while operating as recognizing certification bodies, agree to:

- accept reports from factory surveillance/inspection carried out by other signatories according to agreed terms
- accept components integrated in appliances and which have been tested/verified/inspected by the other signatories
- not request product samples for testing/identification in normal cases

Significant benefit to the manufacturer

The IECEE CB-FCS is intended to result in significant benefit to the manufacturer either by reducing the number of steps to obtain certification or approval provided

by signatories at national level, or by direct market acceptance.

The CB-FCS provides the evidence that each certified product offers the same quality/safety level as the type tested sample. It is accepted among all the participating certification bodies and countries, and speeds up the certification/approval process at national level by avoiding duplicate testing, sampling and factory surveillance/inspection.

Going the extra mile by obtaining IECEE CB-FCS certification thus provides globally active manufacturers with easier access to markets and helps reduce costs and obstacles to international trade.

Your company may benefit significantly from the IECEE CB-FCS if you:

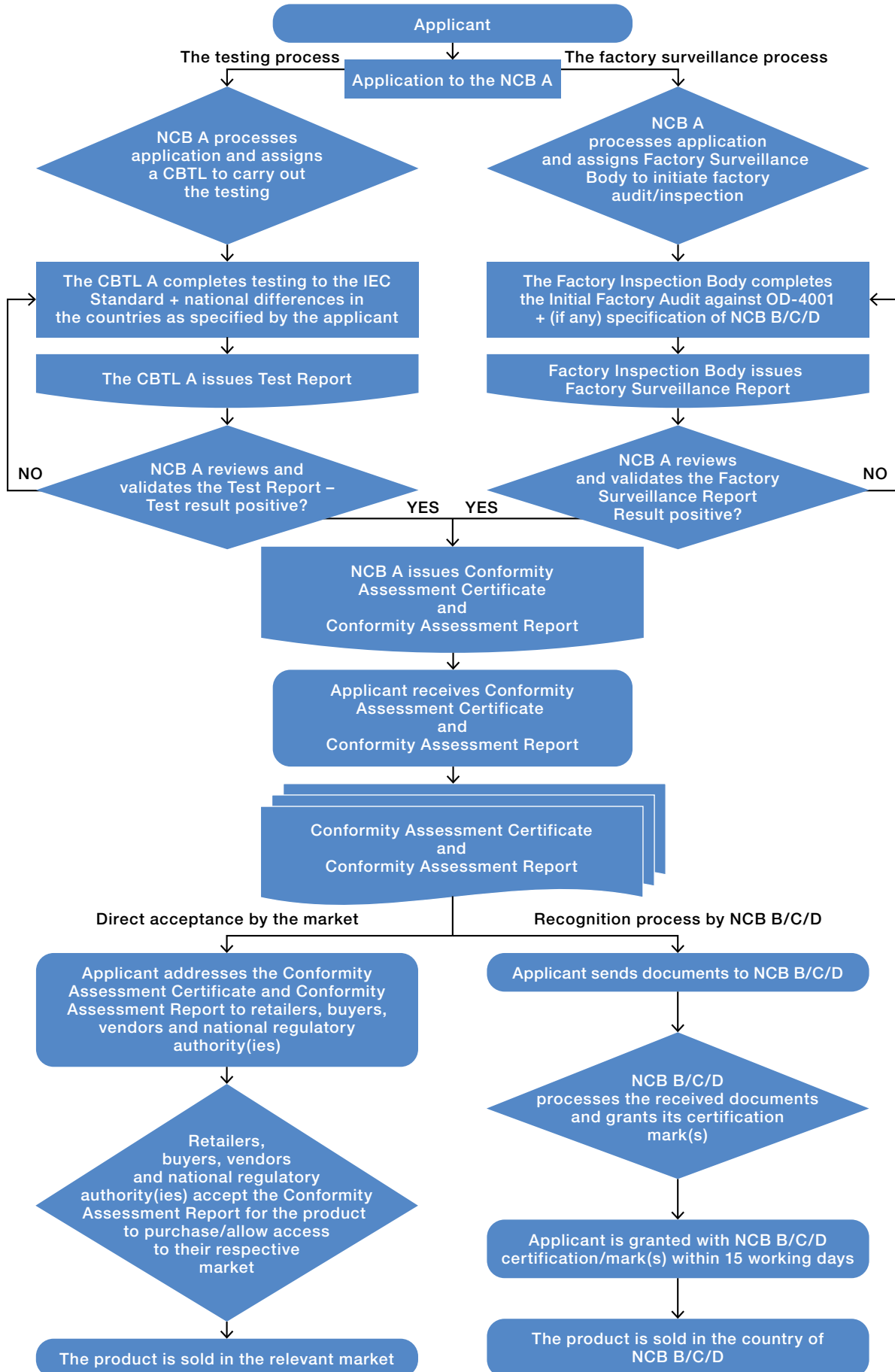
- have one or several manufacturing locations
- want to export your products globally or to several countries
- have a documented quality management system at your manufacturing locations
- need/would like to launch new products simultaneously in several countries

Harmonized procedures

The IECEE CB-FCS rules of procedure and operational documents, including factory surveillance/inspection procedures and guidance, are publically available on the IECEE website www.iecee.org.

All the documents and forms used, as well as qualification requirements for factory inspectors are harmonized between Members. Thereby the general idea of one test, one factory surveillance/inspection and one certificate recognized by all participants can be achieved without the need for further tests and multiple factory visits.

IECEE Full Certification Scheme process



Benefit of Factory Surveillance/Inspection only

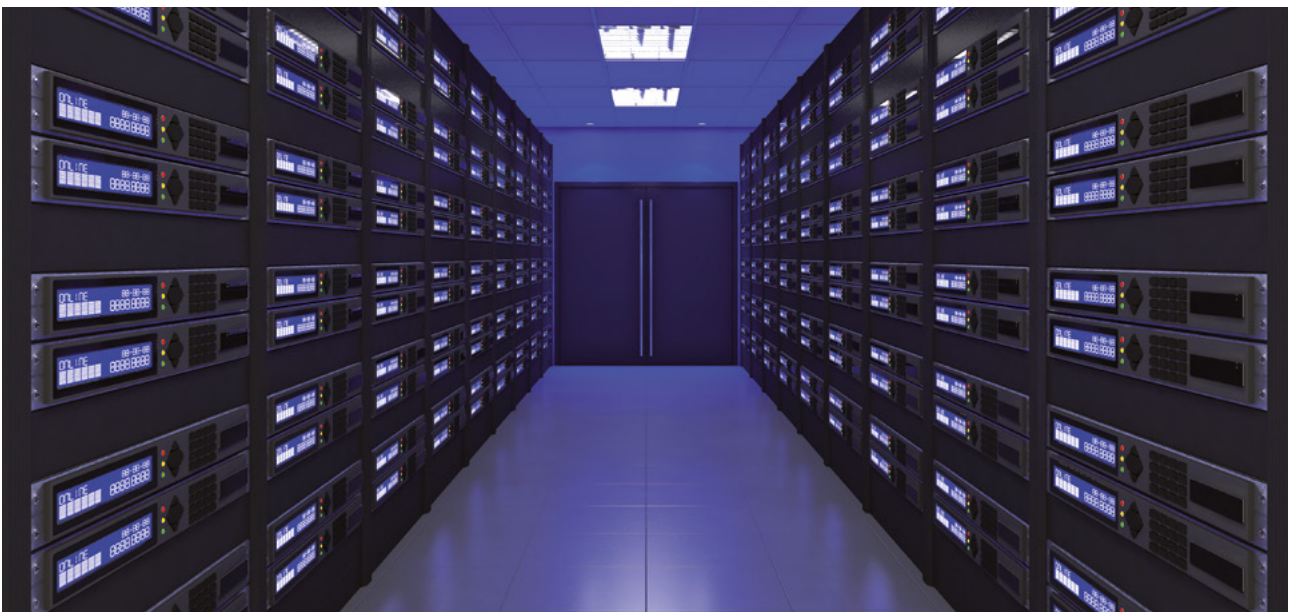
The IECEE Factory Surveillance/Inspection Service can also be performed as a stand-alone service, unrelated to the IECEE CB-FCS.

In this case, it provides manufacturers with a Factory Surveillance/Inspection Report. Manufacturers may be asked to provide such a report as a part of the documentation necessary for entering certain markets.

Whether it is part of the CB-FCS or a stand-alone service, the process has numerous benefits. It provides considerable cost reduction by eliminating the need for multiple testing and factory surveillance/inspections in many different markets. It reinforces the confidence in the safety of a specific product, reduces obstacles to international trade and helps manufacturers retain a competitive edge.

For more info about the IECEE CB-FCS, please check on www.iecee.org under “About the IECEE”, where the current signatories of the CB-FCS MLA can also be found.

The contact addresses of all IECEE Member bodies, National Certification Bodies and accepted laboratories are available under “Members” on the following site <http://www.iecee.org/members/overview/>



IEC System of Conformity
Assessment Schemes
for Electrotechnical Equipment
and Components



3 rue de Varembeé
PO Box 131
CH-1211 Geneva 20
Switzerland

T +41 22 919 0211
info@iec.ch
www.iec.ch